

CHROMATE[®] 4300

ELISA 96 well Microwell plate reader



sales@awaretech.com

Features of the ChroMate[®]

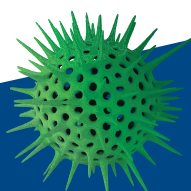
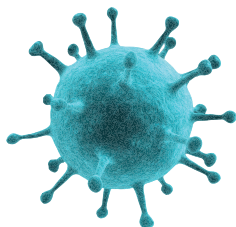
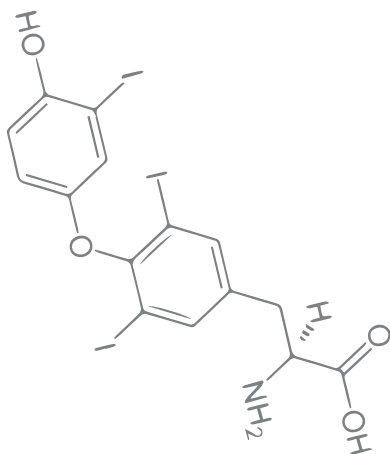
- ◆ Economical open system & compact design
- ◆ Reads an 96 microwell plate in 12 seconds
- ◆ Multiple calculation modes
- ◆ Dependable performance
- ◆ Custom filter configurations available
- ◆ Intuitive software, designed for ease of use

ChroMate[®] is a powerful yet compact 8-channel microwell plate reader which features: Precision optics, user-programmable assays, standard four filter model (405, 450, 492, and 630 nm) with (optional) six filter VIS model.

ChroMate[®] is an open system and may be used to read most microwell based ELISA kits.

Once installed, ChroMate[®] management software comes preconfigured to interface with your PC and the ChroMate[®] analyzer via a high-speed USB connection.

The ChroMate[®] with your PC provides the rapid reading of 96 well microwell plates or individual microwell strips, customizable reports, calibration curve fit, and unlimited data storage to meet the requirements of the modern laboratory.



 **AWARENESS[®]**
TECHNOLOGY, INC.

CHROMATE®

4300 Microplate Reader Specifications

| | |
|-----------------------------------|---|
| Optical measurement range | 0.0 to 4.0 Absorbance units (A) |
| Photometric accuracy | ± (1% of the reading +/-0.010) from 0 to 1.5 ABS) ± (2% of the reading +/-0.010) from 1.5 to 3.0 ABS) |
| Stability | Drift of no more than 0.005A in 8 hours |
| Light source | Halogen lamp source with lamp saver feature |
| Wavelengths | Standard: 405, 450, 492, and 630 nm Optional 6-filter: 405, 450, 492, 545, 600, and 630 nm (must be ordered at time of manufacturing) Filter options from 405 nm to 700 nm |
| Filter Type: | IAD hardcoat interference, 10 nm half bandpass |
| Vessel: | Standard 96-well microwell plates, or strip trays |
| Power Requirements: | 100V or 240V AC, 70W, 50-60Hz (auto-sensing) |
| PC connection: | USB Port |
| Speed: | Reads absorbances of 96 wells in about 12 seconds |
| Plate Transport: | Stepper motor |
| PC interface with ChroMate | Manager software - included. (PC not included) |
| Calculation Modes: | Single point calibration, point-to-point curve fit, polynomial regression, linear and sigmoidal regression (log & linear), cutoff absorbance, multi-point % absorbance |
| Additional Features: | User-programmable open system, selectable plate formatting, alpha numeric test naming, automatic interpretation options, duplicate well options, curve plotting and editing, flags and error messages |
| Certifications: | NRTL Listed, CE Mark Awareness Technology Quality System is certified under ISO13485:2016 |

Enclosure:

All metal enclosure

Dimensions:

Approx. 7.5x8.0x16.5 (19x20.3x42cm)
Weighs 10 lbs. (4.5kg)



ISO 13485:2016



Dri-Dye® Check Strips

For performance verification of Stat Fax®, ChroMate®, and other microstrip and microplate readers



Awareness Technology, Inc. USA & INTERNATIONAL:
1935 S.W. Martin Hwy., Palm City, FL 34990, USA
tel.: +1 772 283 6540, fax: +1 772 283 8020
info@awaretech.com

Awareness Technology, Inc. EUROPE:
Franz-Siegel-Gasse 1, 2380, Perchtoldsdorf, Austria
tel.: +43 (1) 804 81 84, fax: +43 (1) 804 81 85
info@awaretech.eu

Awareness Technology, Inc. MIDDLE EAST:
Q3-146, SAIF Zone, 120543, Sharjah, United Arab Emirates
tel.: +971 (06) 557 80 58, fax: +971 (06) 557 80 59
info@awaretech.com

